



Bothwell District School Newsletter

DEPARTMENT OF
EDUCATION
learners first

12TH SEPT 2019

UPCOMING EVENTS

OUR BIG EVENT

TOMMOROW

13TH SEPT

PINK AND BLUE DAY.

PLUS

SELLING CUPCAKES

**FOOTBALL MATCH
AGAINST GLENORA
SCHOOL GOLD COIN
DONATION FOR
CANCER PROJECT**

**STUDENT COUNCIL
FUNDRAISING.**

ASSEMBLY

MONDAY 16TH

9.00 A.M.

18TH SEPT

CLASS ONE

TMAG EXCURSION.

**LAUNCHING INTO
LEARNING**

EXCURSION

THUR 19TH SEPT

TAGARI LIA

**CHILD & FAMILY
CENTRE**

25TH SEPT

FOOTY COLOURS DAY

SCHOOL PHOTOS

TUESDAY

29TH OCTOBER

Thank you.

Student Voice – Bothwell Students contribute their thoughts!

Bothwell students were recently invited to share their thoughts and understandings of how they learn and what teachers do to help them learn. This was as a part of a project being run by the Education Department to ensure that student voice is a strong feature in identifying best practice in teaching and learning.



The discussions included:

What do teachers do to help you know what you are learning?

Learn along with us...demonstrate

Put you in groups – with people who know more (to help)

Check in before you start to make sure you know what you are doing

What do teachers do to help you know why you are learning something?

They let us know we will use this later in life (e.g. money)

They remind us to have a good attitude and to have a go

How do teachers encourage you to show/explain your thinking?

Ask us to show our working

They encourage and push us to reach our limit

We have questions at the end 'exit pass' to check our thinking

Well done to all who participated!

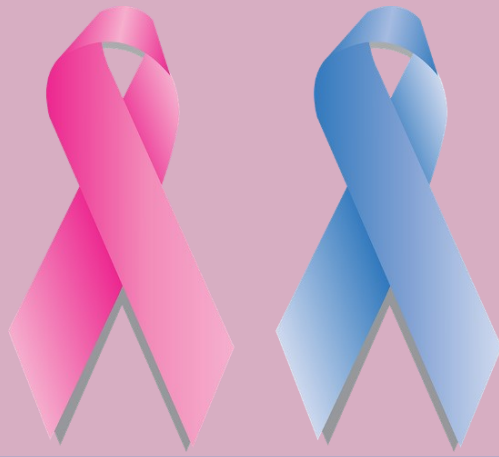
**Cooking Class on Thursdays.
Chicken Stir fry.**



Pirate Peg visit

Kinder/Prep had Pirate Peg visit our classroom on Wednesday. We had lots of fun singing, dancing and finding treasure in our classroom.



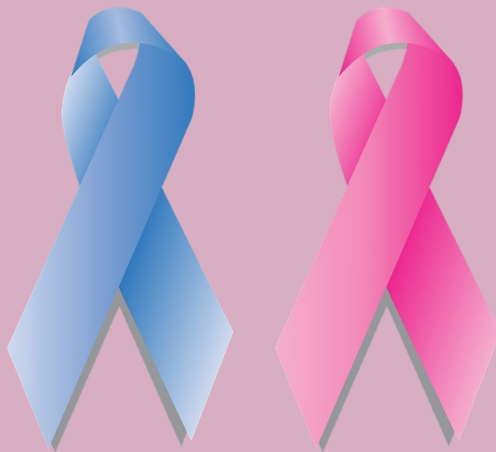


Dear Parent/Carer

Tomorrow, the Bothwell District High Student Council are having a Blue and Pink Day to raise money for testicular cancer and breast cancer research.

We would like students to wear either blue or pink for the day and contribute towards fundraising with a gold coin donation.

Our football match is being played at 11.45 on the oval.
We would love your support!



School Photos—Tuesday 29th October

Student pre paid personalised envelopes have been given to each student. Spare envelopes and family envelopes are available from the school office. Any queries please ask at the office



Bothwell Library

Opening Hours

Tuesday 3.30 p.m.—6.00 p.m.

Wednesday 10.00a.m.—3.00 p.m.

Wi Fi access 8.45 a.m. till 7.15 p.m.

Come along to discover what things you can find like the Libby App, RB Digital
And Trove.



www.libraries.tas.gov.au



Launching into Learning children had Shelly Bear visit this morning. We had a Teddy Bear Picnic with Shelly with our own teddies.





A couple of really important reminders:

Before visiting your child's classroom during the school day please sign in at the office...

All visitors to the school are asked ***not to go directly to classrooms*** but to come via the school office. This is for both safety and accountability reasons.

Mobile phones

We are very lucky that mobile phones are not a huge issue in our school as they are in so many other schools. We are however having **problems with both parents and students** contacting each other in **class time**.

Please if you need to speak to your child in class time, go through the school office or wait until recess/lunch time. Not doing so significantly disrupts teaching and learning.

Fitness class Tuesdays 1:30pm Bothwell Town Hall

Two Grants for Sporting Equipment & Gym Instructor Training

Two grants are available for the purchase of sporting equipment or to undertake training as a gym instructor by completing a Certificate III in Fitness to provide fitness classes in the Bothwell community.

Funding is from the *2018 Pre-election Commitment Grants*.

To register your interest and receive an application please email Jill Bignell (President) at jillyb100@gmail.com

Applications close Friday 13th September, 2019.

Lunch box item swap.

Last fortnight I suggested the possibility of taking out a packaged item from your child's lunchbox and replacing it with a biscuit or muffin.

I would encourage you to continue to try to do this, but as an extra challenge for the next two weeks, take out two packaged items!

Perhaps add a piece of fruit or vegie sticks, as well as the biscuits or muffins, to your child's lunchbox this fortnight.

Other ideas include buying large bags of chips and sharing it out among lunchboxes in re-usable bags.

A large pot of yoghurt can be divided into re-usable containers in the same way.



Footy Colours Day

Dear Parent/Carer

On Wednesday the 25th of September we will be holding Footy Colours Fundraising Day. We would like to ask you to dress up in your favourite footy team colours on the day and donate a gold coin. This has been organised by the Student Council for the School Association.

Thank you.



Canteen Order Form

Name:.....

Toasted sandwiches on Wednesday

Order from the following combinations:

\$2.00 ea.

Please note only one meat choice.

Write combination choice on the brown paper bags available in the office and classrooms.

Please place money in the bag.

Ham		Pineapple	
Cheese		Tomato	
Chicken		Baked Beans	
Mayonnaise		Spaghetti	

Fruit-boxes still available for \$1.00.

Orange		Apple	
--------	--	-------	--

Breakfast Program.

Monday and Thursday will be as normal
in Term Three.

The students can continue to enjoy having some toast and a nice warm Milo at the start of the day on Mondays and Thursdays.

Please feel free to donate any Bread, Milo, Margarine or Jams and Vegemite to the program, this benefits all the students.

Christine Turner & her team of helpers.



PROUDLY
SUPPORTED BY

 **CENTACARE**
evolve
HOUSING



RIDE IN 2 BMX
Your chance to try BMX!

Club	Date	Location
SOUTHERN CITY BMX CLUB	SUNDAY THE 15TH SEPTEMBER 2019 10AM to 11AM	5 ALCORSO DRIVE BERRIEDALE (NEXT DOOR TO MONA)

 SOUTHERN CITY
BMX
CLUB

School Association Contacts

Richard Hallett	0428 863 420
Rachael Clark	0408 618 526
Natasha Lewis	0400 629 887
Annie Ramsay	0408 122 218
Mikaela Wilton	0457 143 836



Launching into Learning

We welcome any new families as well as past families,
9.00—11.00 am Thursday.

Come along and have some fun,
See you there.

Watch the newsletter for updates.



School Office Opening Times **2019**

8.00 am—4.00 p.m.

**Keep an eye on Facebook as any
changes to the above will be
posted on there.**

Chris & Tanya

2019 – School Terms

Students return Tuesday 23rd
July - Fri 27th Sept.

**Term 4 Mon 14th Oct -
Thurs 19th Dec (students
finish)**



School Banking
is
every
Thursday.



ARE YOU SHOWING RESPECT?

R	Responsibility
E	Engaged
S	Safe
P	Positive
E	Effort
C	Community
T	Teamwork

Bothwell District High Values

Our students are working hard on the
schools values in class, if they have done well
they are given raffle tickets.

The raffle is drawn at an assembly.

Two students names are drawn and they re-
ceive a prize as their reward.

School's
Mobile.

No is
0474 533 146

CONTACT DETAILS

Patrick Street, BOTHWELL, 7030

Phone 62 595 518 Fax: 62 595 610

Email Bothwell.DistrictHigh@education.tas.gov.au

Web : <https://bothwelldistricthigh.education.tas.edu.au>